



# OUT-POST JOURNAL

00+

\$15.00 US/CDN  
45

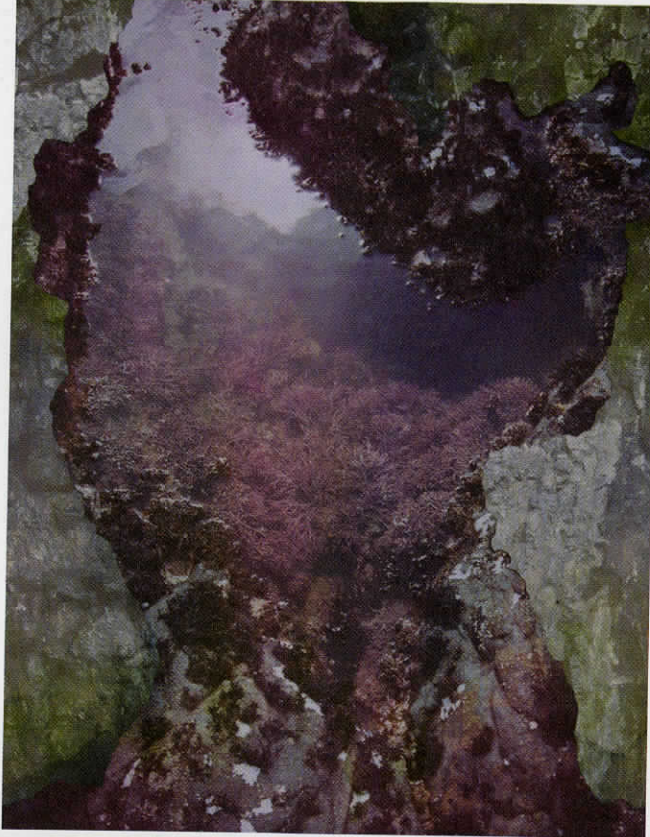
0 74470 80633 2

PROVIDENCE, RI



*Tidal Pool III*, 2012.

Archival-pigment prints, collage on panel, 54 x 43 in. (137 x 109.2 cm).



*Tidal Pool I*, 2012.

Archival-pigment prints, collage on panel, 60 x 43 in. (152.4 x 109.2 cm).



25

THERESA  
GANZ'S  
DEEP  
CUTS

A native New Yorker, photographer and installation artist Theresa Ganz was lured to Providence by a faculty position in Brown's Visual Art Department. In her work, Ganz creates fantastical landscapes by layering delicate slices of photographic source material, creating ornate surfaces and motifs that have little relation to their original contexts. Inspired by both 19th-century Romanticism and a decidedly 21st-century take on truth and representation, Ganz asks us to consider our relationship to the natural world, as well as the tension between documentation and invention inherent in a digital age.

FAVORITE TOOL?

Carbon steel scalpel.

FAVORITE FICTIONAL CHARACTER?

Asterix, he has pluck.

CREATE

